

INSA | INSTITUT NATIONAL
DES SCIENCES
APPLIQUÉES
LYON

NATIONAL INSTITUTE
OF SCIENCE AND TECHNOLOGY
IN LYON



++
++



++ ++ ++ ++
++ ++ ++ ++
++ ++ ++ ++
++ ++ ++ ++

STUDY AT

INSA

Experience

A GREEN AND VIBRANT CITY



Full of history and beauty, Lyon can boast many titles: capital of gastronomy, city of cinema or capital of Roman Gaul... Be amazed by a multi-faceted town!

INNOVATION

Over the centuries, many people from Lyon have left their mark on the arts and sciences. Take, for example, the Lumière brothers, inventors of cinema, André Ampère in the field of physics or Claude Bernard and Marcel Mérieux in the field of medicine. Lyon has always been a city of innovation and continues to develop research centers and science clusters at the cutting edge in fields such as the life sciences, eco-technology and digital technology.

- **600 public and private research centers**
- **13,000 research scientists, including 1,800 internationals**

CULTURE

According to the Journal des Arts, Lyon ranks as France's second city of culture, just behind Paris. And not without reason: the city abounds in museums, from the Musée des Confluences (science and natural history) and the Museum of Contemporary Art, to the Museum of the Resistance and the Institut Lumière (cinema). The city's cultural life encompasses more than 21,000 events throughout the year, including fairs, concerts, plays, festivals and biennials, and some major international events such as the Festival Lumière, the Biennale de la danse, the Biennale d'art contemporain, the Nuits Sonores and the must-see Fête des Lumières, festival of lights.

The city is also highly renowned for its gastronomy with Paul Bocuse, starred restaurants, the Cité de la Gastronomie, and 4,000 restaurants – need we say more?

- **France's leading city of culture after Paris**
- **21,000 events, all year round**

QUALITY OF LIFE

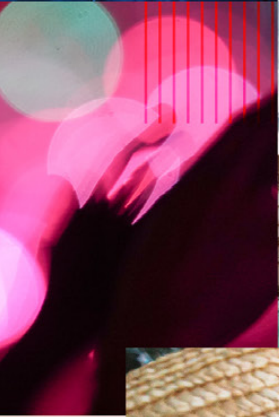
Every year, several million tourists come to Lyon. The capital of the Gauls has become a choice destination for a city break, with plenty to see and do and a high-quality cultural offering. The banks of the Rhône and Saône rivers have been developed to make them the ideal place for a stroll and leisure pursuits. Then there is the Tête d'Or park, a 'green lung' in the heart of the city, and the complete rehabilitation of the Confluence district. This all means that Lyon offers a particularly attractive living environment that is popular with executives, who place Lyon at the top of the list of cities they'd like to settle in. Ideally located in south-eastern France, Lyon is capital of the Auvergne-Rhône-Alpes region and just 2 hours by high-speed train from Paris and 1 hour 40 minutes from the Mediterranean coast and the big ski resorts of the Alps. Lyon-Saint Exupéry airport is connected to 115 destinations and welcomes 8.5 million passengers every year.

- **Elected European Capital of Smart Tourism (European Union, 2019)**
- **Over 600 km of cycle paths**

VILLEURBANNE

The Lyon-Tech La Doua Campus is located in the city of Villeurbanne, just east of Lyon, 15 min away from the city center. It is green and pleasant and the second-largest city on the Rhône river with 150,000 inhabitants.

It welcomes foreign students, particularly during the Nuit des étudiants du Monde (World Students' Night), which takes place in mid-October. This event is an opportunity for the students to get to know one other and find their way around some of the city's key sites.



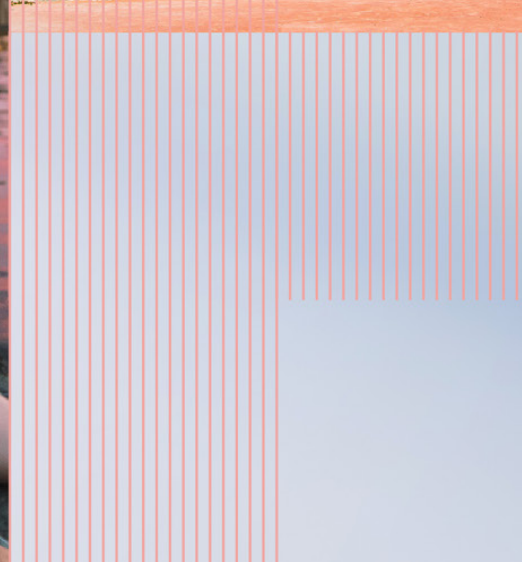
**LYON,
A GREAT PLACE TO STUDY**

The community of universities and institutions offers a rich and diverse range of courses from four universities and Grande Ecole higher education establishments.

With internationally renowned institutions that work hand-in-hand with some high-profile competitive clusters, Lyon has plenty to offer.

25,000
international students

180,000
students



Welcome Home

Croissants and French bread. A morning run.
Or early-morning revision. Enjoy all of that on campus,
in our student accommodation and eateries.
Embark on new adventures and create great memories.

CAMPUS MAP

CLUBS AND ASSOCIATIONS

There is strong involvement in clubs and associations at INSA Lyon. In fact, there are 110 associations in all, giving everyone a chance to put their talents to good use while contributing to campus life.

The Student Union of INSA Lyon is one of the largest organizations of its kind in France and every year it organizes some flagship events including one of the biggest student festivals in Europe (24 heures de l'INSA), induction activities, a sports challenge, a gala, a TEDxINSA talk... and much more! In fact, many of these events have an international scope.



TAKE ADVANTAGE OF OUR CULTURAL OFFERINGS

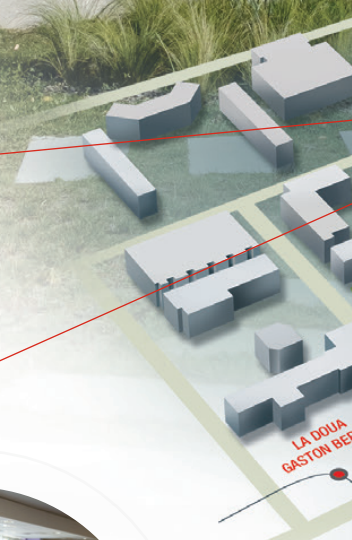
Culture is part of our students' day-to-day lives: the cultural center in the Humanities Department hosts contemporary art exhibitions, lectures and an array of other cultural events all year round. There is also a 400-seat concert hall, entirely managed by students.



EATERIES

The INSA Lyon on-campus restaurants provide meals for students and school staff, from breakfast to dinner, seven days a week. There are different options for students according to their diet, regardless of whether or not they live on campus.

More information on: <https://www.insa-lyon.fr/en/catering>





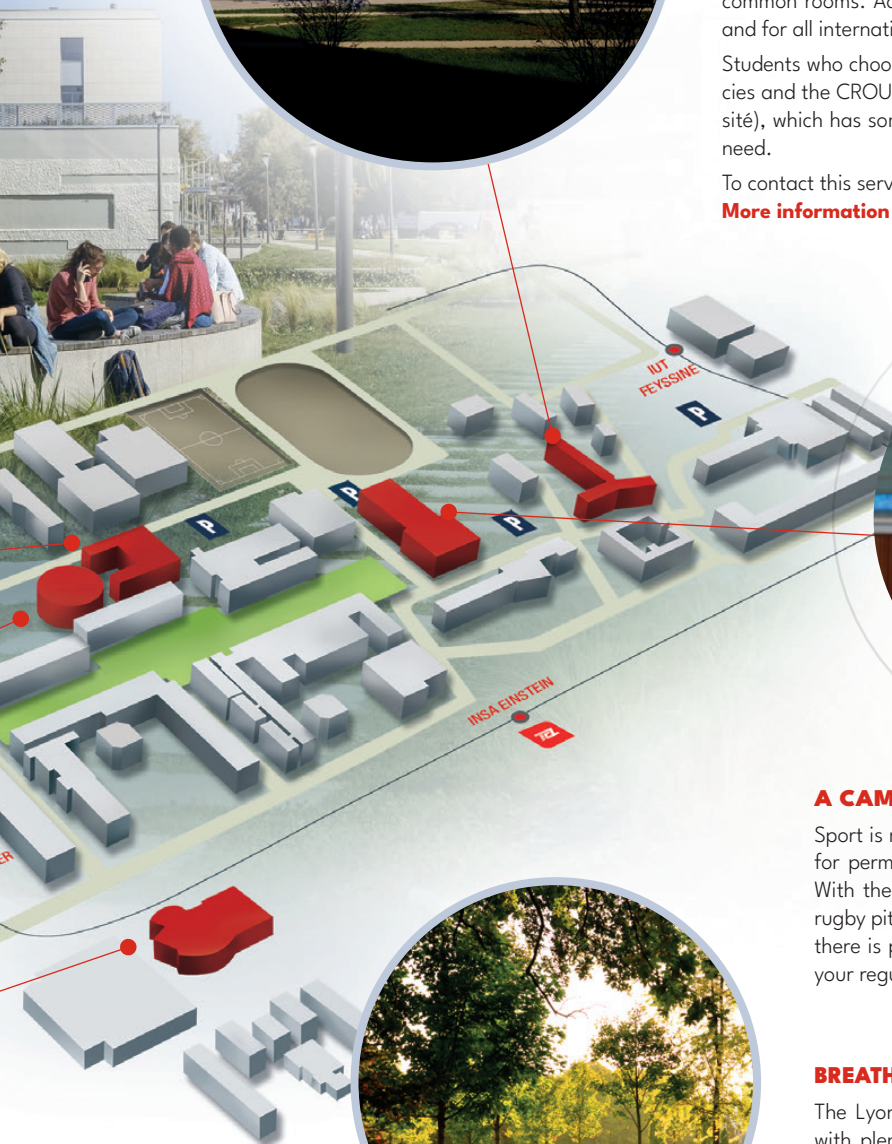
YOUR NEW HOME

The Lyon Tech-La Doua campus can accommodate all students in one of the school's 11 halls of residence. The accommodation ranges from studio flats to two-bedroomed apartments which are furnished with a bed, a desk, a bathroom and a small kitchen. Prices range between €260 and €530 per month for a double room in a two-bedroomed apartment, or a one-bedroomed apartment with balcony. The following charges are included: heating, electricity, water, condominium taxes, wifi and access to common rooms. Accommodation is guaranteed for the first year at INSA and for all international students who apply for it.

Students who choose to live off campus can contact the real estate agencies and the CROUS (Centre régional des Écoles et des Services d'Université), which has some subsidized accommodation reserved for students in need.

To contact this service: **+33(0)4 72 80 17 70 – www.crous-lyon.fr**

More information on: www.insa-lyon.fr/en/residences



A CAMPUS FULL OF ENERGY

Sport is really important at INSA Lyon. In fact, it is compulsory for permanent students and there's an activity for everyone. With the sports association, the gymnasium and football and rugby pitches, tennis courts, athletics track and swimming pool, there is plenty of opportunity to do extra sport, in addition to your regular physical education classes.

BREATHE IN THE CAMPUS AIR

The Lyon-Tech La Doua campus is a pleasant place to study, with plenty of green space. Located near Parc de la Feyssine and Parc de la Tête d'Or, it offers a refreshing and healthy living environment.



OYONNAX

An hour's drive from Lyon, there is a second INSA Lyon campus in the town of Oyonnax. The result of a partnership with the Technical and Industrial Center for Plastics and Composites (IPC) in the heart of Plastics Valley, close to some major companies, it possesses a wide range of sports and leisure facilities. Oyonnax is recognized as a hub and a competitive cluster of the plastics industry.

The MID Center is an international benchmark for smart plastics and fabrics.

The people who study, teach, research and work here are what makes INSA Lyon so special. Everyone nurtures the 'INSA culture', lives at 'INSA pace' and has their own special place in the broad 'INSA family'.

Discover what lies behind these four letters from the viewpoint of the people who make our school what it is.



715
teachers and
researchers

9
specialized
departments

" Teaching at INSA Lyon is far from humdrum. Here, humanities teachers, like me, don't only deal with student engineers, but with future citizens and tomorrow's decision-makers.

Our job is to provide them with all the keys they need to be as excellent and, at the same time, as humane as possible.

I am proud to teach this new generation, who are full of innovation and hope. "

Gonzalo Suarez
Teacher in the Core Foundation
Engineering Program

THEY
ARE

INSA



" Entering INSA Lyon, I didn't know the amazing journey I was about to begin. What struck me most at first, and still impresses me after 4 years, is the diversity of the opportunities the school offers. There are sports, arts, cultural activities, debates, work experiences, and so much more to explore. I am able to combine my studies, my hobbies and my passion thanks to INSA Lyon. Here you have many ways of learning. Not only through your classes but also through personal research, experiments and projects. When you join INSA Lyon, you join a second family. Whether it is your classmates, your association buddies or your teammate, people from all over the world with different backgrounds are here to share these wonderful years with you. This school allows you to dream and to pursue your dream. You can study what you love, research what you're curious about and have fun with your passion. INSA Lyon really makes you discover yourself and expand your horizons. "

Clémence Taoko,
Student in Materials

47%
female students
in first year

110
student clubs and
associations

28%
of international
students



“ At INSA Lyon, the research landscape is extremely rich: there are many centers working side-by-side and interacting – with one other and with students. This brings researchers from very different disciplines together and fosters the emergence of new partnerships and some innovative research projects.

INSA Lyon’s research is structured around societal issues so there is an interesting framework in which to spark new synergies between centers. The business world recognizes this and there are multiple partnerships with companies! ”

Aline Bel-Brunon
Researcher at Laboratory of Contacts and Structural Mechanics

200
patents filed
since the creation
of Insavalor

22
research
laboratories



“ I’m proud to say that I’ve been part of the INSA Lyon team for over 15 years. What particularly strikes me is the importance the institution places on people. In the International Relations Office, we are fully committed not only to enhancing the international visibility and reputation of INSA Lyon but also to continually improving the welcoming and integration of students and staff from diverse backgrounds and nationalities. It’s a real pleasure to contribute to the internationalization of INSA Lyon and to see the positive impact we have on the institution’s community. ”

Corinne lafrate Gran, Head of International Relations Office

658
administrative and technical staff



“ Thanks to INSA, where I met my friend and partner in my company, where we learned how to drive vintage racing cars. After our Mechanical Engineering degree, our entrepreneurial project took off. Professionals from the world of racing gave us a chance. Today, we offer premium driving experiences which are like a real journey through time. We have stayed very close to our school because that’s where it all started. ”

Julien Chaffard
Graduated in mechanical engineering

97%
of graduate in 2022
would recommend
their school to a
friend

+100,000
INSA engineers across
the world, including
55,247 from INSA Lyon





We are SPECIALISTS IN

ENGINEERING MASTER'S LEVEL (MASTER'S DEGREE)

THE GRADUATE-LEVEL CYCLE COMPRISES THREE YEARS OF STUDY IN A SPECIALIZED ENGINEERING DEPARTMENT, LEADING TO AN ENGINEERING DEGREE.

AT INSA LYON, THERE ARE NINE SPECIALTY DEPARTMENTS. ENOUGH TO FIND THE RIGHT ONE?



BIOSCIENCES

Trains managers in the health, agri-food and environmental industries who are the interface between biologists, mathematicians and computer scientists.

KEYWORDS: Biochemistry and Biotechnology/Bioinformatics and Modelling



CIVIL ENGINEERING AND URBAN PLANNING

Trains construction and development managers, experts in environment, infrastructure and engineering structures.

KEYWORDS: Construction, Geotechnics, Water, Building Physics, Urban Studies

A dual course in engineering and architecture is possible in partnership with the Lyon School of Architecture (ENSAL).



ELECTRICAL ENGINEERING*

Trains managers in the fields of electronics, electrical engineering, automation, industrial IT and telecommunications.

KEYWORDS: energy conversion, embedded systems, telecommunications, industrial automation, signal and image processing, electric vehicles, energy distribution networks, energy conversion, embedded systems, telecommunications, industrial automation, signal and image processing, electric vehicles, energy distribution networks



ENERGY AND ENVIRONMENTAL ENGINEERING

Trains managers so they are able to propose and implement efficient, economical and economically viable energy solutions, while minimizing environmental impacts.

KEYWORDS: energy production and distribution, building and transport energy, environmental processes



INDUSTRIAL ENGINEERING

Trains managers who are experts in production, supply and distribution systems for goods and services and who are capable of designing, implementing and managing production systems.

KEYWORDS: supply chain, continuous improvement, information systems



MECHANICAL ENGINEERING*

Trains mechanical engineers in innovation, R&D, design and manufacturing design capable of overseeing major products, from idea to product, using tools for modelling and experimentation.

KEYWORDS: energy, transport, biomedical and health, sports and leisure, packaging



INFORMATION TECHNOLOGY*

Trains managers, project managers, designers/architects and integrators, specialists in the digital society.

KEYWORDS: design methods, algorithms, languages, operating systems, computer machine components, design and integration, distributed architectures, artificial intelligence, compilation



MATERIALS

Trains experts in materials proficient in mechanics, electronics, physics and chemistry, processes and durability.

KEYWORDS: materials, structural applications, metals, polymers, ceramics, composites, structural applications.



TELECOMMUNICATIONS*

Trains developers, deployers and administrators of telecommunications systems serving clients and with a forward-looking vision of a constantly evolving field.

KEYWORDS: digital transformation, transmission technology, networks, computing, data integrity, privacy, digital transformation, transmission technology, data integrity, privacy

*Specialities offering work/study programs.

THE TRAINING PROGRAM IN A NUTSHELL



FIVE-YEAR ENGINEERING COURSE

HIGH SCHOOL

CORE FOUNDATION ENGINEERING PROGRAM

Two years of general scientific and technical education

BACHELOR

A three-year curriculum leading to a Bachelor degree

ENGINEERING MASTER'S LEVEL (MASTER'S DEGREE)

Three years' specialization in one of the departments leading to an

ENGINEERING DEGREE
(equivalent to Master of Science in Engineering)

INTERNATIONAL MASTERS OF SCIENCE

A two-year English-taught program leading to a master's degree, providing opportunities in industry, research, and academia.

PhD
A three-year professional research degree, culminating with the student being awarded the title of Doctor after their thesis defense

or **POST-MASTER'S DEGREES**

A 12- to 18-month track on one of the 6 programs, designed to specialize or expand skills after a master's degree.

PROFESSIONAL CAREER

TRAINING

GETTING A DEGREE

CORE FOUNDATION ENGINEERING PROGRAM

(FIMI: Formation Initiale aux Métiers d'Ingénieur)

30
ECTS PER
SEMESTER

2
YEARS

The Core Foundation Engineering Program gives students a high-level scientific culture through scientific, technical and humanistic education, essential for any responsible engineer.

For two years on this undergraduate course, students attend lectures, tutorials and carry out practical work.

This program does not lead to a qualification, but prepares students for the engineering master's level.

<https://www.insa-lyon.fr/en/classical-preparatory-level>



OPTIONS

INTERNATIONAL SECTIONS

Attached to the Core Foundation Engineering Program, the international sections trains students under international, multi-cultural conditions, by mixing French students with students from other origins. Additionally, these sections include two mandatory foreign language courses, enriching students' linguistic skills.

- **AMERINSA:** civilization courses, conferences on Europe and Latin America, intercultural, scientific and audiovisual projects, work placement in France.
- **ASINSA:** introductory work placement in Asia, specific modules on Asian industrial cultures, scientific, technical or documentary research projects in international teams.
- **EURINSA:** scientific projects in international teams, introductory work placement in a European country.
- **SCAN (English):** core curriculum of the Core Foundation Engineering Program taught 80% in English and 20% in French, modules on Anglo-American civilizations, a two-week stay in a European university.
- **Year Abroad option:** students who have completed their first year of the Core Foundation Engineering Program have the option to spend either a semester or a full academic year at one of INSA Lyon's partner universities.

ART SECTIONS

- **Music, Arts, Dance, Theatre and Cinema:** five different sections in the Core Foundation Engineering Program to combine studies with creative expression.

TOP-LEVEL ATHLETE SECTION

- Provides top-level athletes with the conditions needed to both pursue their sporting career and to prepare their engineering diploma.

<https://www.insa-lyon.fr/en/node/17>



INTERNATIONAL BACHELOR IN AEROSPACE ENGINEERING

30
ECTS PER
SEMESTER

3
YEARS

Three-year course focused on three main areas:

- **Mechanics**
- **Aerospace**
- **Materials**

This program, offered jointly by INSA Lyon, ECAM, the University of Strathclyde (Glasgow, UK), and the University of Twente (Enschede, NL), is taught entirely in English and offers a unique opportunity to acquire a solid foundation in the highly sought-after engineering fields of mechanics, materials and aerospace, as well as a first professional experience and the development of an international profile. Students in this program will spend a total of 5 months (spring semester) in Glasgow or Enschede and will benefit from all on-campus facilities.

<https://www.insa-lyon.fr/fr/formation/international-bachelor>

INTERNATIONAL BACHELOR IN INDUSTRIAL AND TECHNOLOGICAL CHANGE

30
ECTS PER
SEMESTER

3
YEARS

Three-Year courses with 3 specialities :

- **Plastics and industrial ecology**
- **Eco-design of Air conditioning, Heat and Ventilation**
- **Build and adapt the infrastructures for energy**

This program is designed to prepare engineers who will lead the transition to a more sustainable industry. A B2 level in French is required.

<https://www.insa-lyon.fr/en/node/17422>



ENGINEERING MASTER'S LEVEL (Master's Degree)

30
ECTS PER
SEMESTER

3
YEARS

Comprising 3 years of study in one of our 9 engineering departments*, the program is 80% speciality modules and 20% humanities, equivalent to a total of at least 50 hours spent studying one or more languages, philosophy, culture, business knowledge and management.

The curriculum also includes an industrial work placement and a research project. If they wish, foreign students can follow weekly French language lessons.

*See page «We're specialists in».



30
ECTS PER
SEMESTER

AT LEAST
2
SEMESTERS

DOUBLE DEGREES

This is an opportunity to study for a double international degree, i.e. the INSA engineering degree plus another awarded by the partner university. It prepares for a successful transition into the working world in both countries. 40 double degrees are available in the third year of INSA Lyon's engineering cycle.

<https://www.insa-lyon.fr/en/node/15765>

INTERNATIONAL MASTERS OF SCIENCE

A two-year English-taught program with a 6-month internship leading to a master's degree. The program prepares students for careers in industry, research, and academia. You can choose from our four Master of Science courses: Artificial Intelligence, Acoustics, Nanoscale Engineering, and Risks and Environment - Water and Wind Engineering.

<https://www.insa-lyon.fr/en/node/62>

75
ECTS

AT LEAST
2
SEMESTERS

POST-MASTER'S DEGREES

This is an internationally recognised diploma open to MSc graduates and lifelong learners with five years in higher education and seeking to boost their career and benefit from excellent professional prospects, thanks to expertise in a specific field and contacts in the industrial environment.

Six post-master's courses are on offer:

- **Cybersecurity**
- **Industrial Engineering : Industry 4.0, Supply Chain, Operational Efficiency**
- **Electrified Vehicles**
- **Environment and Energy Eco-Efficiency**
- **Computer Science, Information Systems and Networks**
- **Polymers and Composites : eco-responsibility, efficiency and digitalization**

A B2 level in French is required to follow the programs.

<https://www.insa-lyon.fr/en/node/61>

3
YEARS

PHD STUDIES

INSA Lyon has eight doctoral schools co-accredited by the French Ministry of Higher Education and Research. The research projects are conducted within one of INSA Lyon's 22 research centers, organised to tackle the five structural societal challenges:

- **Digital Society and Information**
- **Energy for a Sustainable Development**
- **Environment: Natural, Industrial, and Urban Environments**
- **Global Health and Bioengineering**
- **Transport: Structures, Infrastructures, and Mobilities**

<https://www.insa-lyon.fr/en/phd-studies>



TRAINING

NON-DEGREE-SEEKING STUDENTS

EXCHANGE PROGRAM

MAX
30
ECTS

1 SEMESTER
OR
1 YEAR

The exchange program is a chance for foreign students to come and study at INSA Lyon and immerse themselves in French culture in the city of Lyon. They can select their own « à la carte » training program with 60% of their classes in one of our main departments and 40% in a secondary department.

<https://exchange-student.insa-lyon.fr>

French language lessons and induction programs

The induction program is an opportunity for foreign students arriving in France on an exchange to pick up the French language quickly and effectively through intensive French lessons before the start of the school year. There is also a range of social and cultural activities to help students settle in and explore Lyon.

Summer School: 3 weeks - 4 ECTS - 85 hours

Winter School: 2 weeks - 2 ECTS - 40 hours

Semester classes: 2 hours per week - 2 ECTS - 26 hours

Note: Attending summer/winter school is mandatory for students who have selected courses taught in French but currently have an A2 level.

<https://fle.insa-lyon.fr>

SHORT COURSES

Open to engineering and sciences students with a scientific background.

SMART LYON

A two-week short training program in March, focused on the technical, societal and ethical issues of smart cities, interculturality and the basics of the French language. Students also partake in cultural activities for an immersive experience.

2 ECTS
1 US
CREDIT

2
WEEKS

INNOV@NSA

A four-week short training program in May/June, covering the basics of the French language, specific modules on industrial and societal topics, cross-cultural communication, connected devices, innovation and management. Cultural activities are organised for an immersive experience.

12 ECTS
6 US
CREDIT

4
WEEKS

HUMAN'INSA

A three-week short training program in June/July, centered on humanitarian engineering, artificial intelligence, cross-cultural communication, and the basics of the French language, with cultural immersion activities for an immersive experience.

6 ECTS
3 US
CREDIT

3
WEEKS

<https://www.insa-lyon.fr/en/short-programs>



RANKINGS

2025 QS WORLD UNIVERSITY RANKING

- In the top 30% of the best universities in the world.
- Ranked as the 170th European institution out of 510 institutions.
- Ranked as the 11th French institution across all disciplines out of 35 institutions.
- Second highest-ranked institution in Lyon across all disciplines.

2024 QS WORLD UNIVERSITY RANKING BY SUBJECT

- Within the top 150 institutions in Materials Sciences and Mechanical Engineering.
- Within the top 200 institutions in Civil and Structural Engineering and Engineering & Technology.
- Within the top 250 institutions in Electrical and Electronic Engineering and Computer Science and Information Systems.

2024 TIMES HIGHER EDUCATION (THE) IMPACT RANKINGS

INSA Lyon ranks in the global top 300 of higher education institutions committed to the following Sustainable Development Goals (SDGs):

- Affordable and Clean Energy (SDG 7).
- Reduced Inequalities (SDG 10).
- Sustainable Cities and Communities (SDG 11).

2023 SHANGHAI RANKING BY SUBJECT

- Within the top 75 institutions worldwide for Mathematics.
- Within the top 100 institutions worldwide for Mechanical Engineering.



INSA

AROUND THE

World

One of France's leading engineering schools, INSA Lyon is in constant touch with the rest of the world. In addition, international mobility is an imperative for all students. Come and meet students from all walks of life!



28%

international students
welcomed each year



41

double-degree
agreements in
18 countries



220

partner
universities
worldwide



105

nationalities represented



9 foreign languages taught as
well as French as a foreign
language





TODAY'S RESEARCH *For tomorrow*

INSA is not just an engineering school. It is also a large research hub with 22 centers. Constantly working with companies and the industrial sector, our centers are specialized in five areas. It is a unique opportunity for our students to obtain a high quality research experience in one of our research centers.

• ENERGY FOR SUSTAINABLE DEVELOPMENT

Directly linked to the policies announced by the French government and the European Union in terms of energy transition, the challenge is to envision the energy landscape of tomorrow. "Energy for Sustainable Development" is based on research into technological and economic development, and addresses issues of impact, management and cost.

This is structured around 5 main themes:

- Efficient heat and electricity production
- Photovoltaic solar energy
- Networked energy
- Reliability, risk and multi-criteria assessment
- μ -Energy and Nomadic Energy Systems

• ENVIRONMENT: NATURAL, INDUSTRIAL AND URBAN ENVIRONMENTS

Environmental issues arise at every level: products that respect both nature and people, growing urbanization, natural and industrial risks, climate change, and so on. INSA Lyon is required to train its engineering students in technically and economically pragmatic, innovative solutions that are capable of respecting the well-being of people and minimizing environmental impact.

This is structured around 5 main themes:

- Environmentally and health-friendly processes and products
- Management and recovery of polluted materials and waste
- Natural and industrial risks
- Water resources and environments
- Imagining the engineering required for a sustainable environment and a habitable world

• INFORMATION AND THE DIGITAL SOCIETY

Digital technology is a major social issue for anyone involved in information science and technology, and it raises issues such as the digitization or processing of collected data. INSA Lyon researchers and their partners work on all information processing processes, from capturing information to analysing its use once it has been processed, while conducting multidisciplinary research.

This is structured around 4 main themes:

- Ambient intelligence, nomadism and sensors
- Social Interactions, Human/System and System/Human
- Digital content: from signal to semantics
- Extended Enterprise

• GLOBAL HEALTH AND BIOENGINEERING

A health-care system that is efficient at all levels and whose benefits are accessible to all remains a priority for our society today. In response to society's expectation in this respect, putting forward specific solutions is a daily challenge, making progress in multiple areas of global health and bioengineering indispensable. INSA Lyon has taken up this challenge through four areas of expertise: studies on various model organisms, development of new molecules and medical devices, and organization of healthcare systems.

This is structured around 5 main themes:

- Metabolic, cardiovascular and neurological diseases
- Repairing and regenerating the Human Being
- From the connected device to the health system
- Imaging and modelling the living
- Micro-organisms and their interactions with the environment

• TRANSPORT: STRUCTURES, INFRASTRUCTURES AND MOBILITY

INSA Lyon's transport expertise has been developed in partnership with the local and national business network. Today, the stakes are high and manifold for all stakeholders in society, especially when it comes to reducing environmental impact, maintaining the competitiveness of industry, and formulating mobility policies. The challenges for "Transport: structures, infrastructures and Mobility" require strong interaction between several disciplines, and INSA Lyon centers benefit from recognized expertise in the field of engineering, meaning they provide high added value.

This is structured around 5 main themes:

- The lightening and functionalization of materials
- Vehicle architectures
- Infrastructure and communication
- Fleets and transport systems
- Multi-scale modelling

<https://www.insa-lyon.fr/en/research>

INSAVALOR

Forming a bridge between research and companies, INSAVALOR is the R&D, technology transfer and continuous development subsidiary of INSA Lyon. It facilitates relationships between centers and businesses in need of technology solutions, skills and training for their innovative projects.

Its role: to identify the needs of businesses in terms of knowledge, technology and training, and to mobilize scientific teams in order to propose innovative solutions.

INSAVALOR is also involved in hosting innovative companies and supports start-ups.

- Over €15 million sales revenue
- 150 employees
- 1,200 trainees in continuing education
- 1,000 industrial contracts signed per year
- 50 innovative companies hosted

For more information:

<https://www.insavalor.fr>

INTERNATIONAL RELATIONS OFFICE

Building Charlotte Perriand
17, avenue des Arts
69621 Villeurbanne CEDEX - France

Tél: + 33 (0)4 72 43 83 91
E-mail: dri@insa-lyon.fr



INSA | INSTITUT NATIONAL
DES SCIENCES
APPLIQUÉES
LYON



Supported by
Erasmus+
Enriching lives, opening minds.

La Région
Auvergne-Rhône-Alpes

